

İbrahim Kaçtıoğlu designed the extremely thick unicas typeface *Seamus* with humor, drawing his inspiration from the earliest American comics. The design of *Seamus* is exuberant, exaggerated, and caricatural. It's generous forms balloon out like Popeye's biceps. Its massive strokes contrast with its particularly thin crossbars, and the "overinflated" curves are enhanced by tiny counters. Yet its particularly expressive letters fit together perfectly, making *Seamus* a display typeface with a particularly distinct style.



292 PTS

SE

112 PTS

SEAM

56 PTS

SEAMUS HE

32 PTS

SEAMUS HEAVY SEA

24 PTS

SEAMUS HEAVY SEAMUS HE

SEAMUS HEAVY

**SEAMUS  
HEAVY**

## INTRODUCTION

## OWNERSHIP AND LICENCE

A typeface is created by a designer whose art is to transform an original typographic artwork into a computer file or files. As a consequence a typeface is – as a work – protected by laws pertaining to intellectual property rights and – as software – can not be copied and/or installed without first acquiring a nominative licence.

In no way, shape or form may a typeface be transmitted to a third party or modified. The desired modifications in the context of the development of a visual identity, can only be effected by the designer himself and only after acquisition of a written authorisation from 205TF.

The user of a 205TF typeface must first acquire of a licence that is adapted to his needs (desktop, web, application/epub, TV/film/videos web).

A licence is nominative (a physical person or business) and is non-transferable. The licensee can not transmit the typeface files to other people or organisations, including but not limited to partners and/or subcontractors who must acquire a separate and distinct licence or licences. The full text of the licence and terms of use can be downloaded here: any person or entity found in breach of one or more terms of the licence may be prosecuted.

## THE OPENTYPE FORMAT

The OpenType format is compatible with both Macintosh and Windows platforms. Based on Unicode encoding it can contain up to 65,000 signs\* including a number of writing systems (Latin, Greek, Cyrillic, Hebrew, etc.) and numerous signs that allow users to create accurate and sleek typographic compositions

(small capitals, aligned and oldstyle numerals, proportionals and tabulars, ligatures, alternative letters, etc.). The OpenType format is supported by a wide range of software. The dynamic functions are accessed differently depending on the software used.

\*A Postscript or Truetype typeface can contain no more than 256 signs.

## SUPPORTED LANGUAGES

Abenaki	French	Malay	Slovenian
Afaan Oromo	Frisian	Maltese	Slovio
Afar	Friulian	Manx	Somali
Afrikaans	Gagauz	Maori	Sorbian Lower
Albanian	Galician	Marquesan	Sorbian Upper
Alsatian	Ganda	Meglenoromanian	Sotho Northern
Amis	Genoese	Meriam Mir	Sotho Southern
Anuta	German	Mirandese	Spanish
Aragonese	Gikuyu	Mohawk	Sranan
Aranese	Gooniyandi	Moldovan	Sundanese
Aromanian	Greenlandic	Montagnais	Swahili
Arrernte	Guadeloupean	Montenegrin	Swazi
Arvanitic	Gwichin	Murrinhpatha	Swedish
Asturian	Haitian Creole	Nagamese Creole	Tagalog
Atayal	Han	Nahuatl	Tahitian
Aymara	Hawaiian	Ndebele	Tetum
Azerbaijani	Hiligaynon	Neapolitan	Tok Pisin
Bashkir	Hopi	Ngiyambaa	Tokelauan
Basque	Hotcak	Niuean	Tongan
Belarusian	Hungarian	Noongar	Tshiluba
Bemba	Icelandic	Norwegian	Tsonga
Bikol	Ido	Novial	Tswana
Bislama	Igbo	Occidental	Tumbuka
Bosnian	Ilocano	Occitan	Turkish
Breton	Indonesian	Old Icelandic	Turkmen
Bulgarian	Interglossa	Old Norse	Tuvaluan
Romanization	Interlingua	Oshiwambo	Tzotzil
Cape Verdean	Irish	Ossetian	Ukrainian
Catalan	Istrosromanian	Palauan	Uzbek
Cebuano	Italian	Papiamentto	Venetian
Chamorro	Jamaican	Piedmontese	Vepsian
Chavacano	Javanese	Polish	Vietnamese
Chichewa	Jerriais	Portuguese	Volapuk
Chickasaw	Kaingang	Potawatomi	Voro
Chinese Pinyin	Kala Lagaw Ya	Qeqchi	Wallisian
Cimbrian	Kapampangan	Quechua	Walloon
Cofan	Kaqchikel	Rarotongan	Waraywaray
Cornish	Karakalpak	Romanian	Warlpiri
Corsican	Karelian	Romansh	Wayuu
Creek	Kashubian	Rotokas	Welsh
Crimean Tatar	Kikongo	Sami Inari	Wikmungkan
Croatian	Kinyarwanda	Sami Lule	Wiradjuri
Czech	Kiribati	Sami Northern	Wolof
Danish	Kirundi	Sami Southern	Xavante
Dawan	Klingon	Samoan	Xhosa
Delaware	Kurdish	Sango	Yapese
Dholuo	Ladin	Saramaccan	Yindjibarndi
Drehu	Latin	Sardinian	Zapotec
Dutch	Latino Sine	Scottish Gaelic	Zazaki
English	Latvian	Serbian	Zulu
Esperanto	Lithuanian	Seri	Zuni
Estonian	Lojban	Seychellois	
Faroese	Lombard	Shawnee	
Fijian	Low Saxon	Shona	
Filipino	Luxembourgish	Sicilian	
Finnish	Maasai	Silesian	
Folkspraak	Makhuwa	Slovak	

INTRODUCTION

---

ELEMENTARY PRINCIPLES OF USE

---

**To buy ore** By buying a typeface you support typeface designers who can dedicate the time necessary for the development of new typefaces (and you are of course enthusiastic at the idea of discovering and using them!)

**Copy?** By copying and illegally using typefaces, you jeopardise designers and kill their art. In the long term the result will be that you will only have Arial available to use in your compositions (and it would be well deserved!)

**Test!** 205TF makes test typefaces available. Before downloading them from [www.205.tf](http://www.205.tf) you must first register. These test versions are not complete and can only be used in models/mock ups. Their use in a commercial context is strictly prohibited.

RESPONSIBILITY

---

205TF and the typeface designers represented by 205TF pay particular attention to the quality of the typographic design and the technical development of typefaces.

Each typeface has been tested on Macintosh and Windows, the most popular browsers (for webfonts) and on Adobe applications (InDesign, Illustrator, Photoshop) and Office (Word, Excel, Power point).

205TF can not guarantee their correct functioning when used with other operating system or software. 205TF can not be considered responsible for an eventual “crash” following the installation of a typeface obtained through the [www.205.tf](http://www.205.tf) website.

## CHARACTER MAP

## LATIN UPPERCASES

ABCDEFGHIJKLMNOPQRSTUVWXYZ

## LATIN LOWERCASES

A B C D E F G H I J K L M N O P Q R S T U V W X Y Z

## STANDARD PUNCTUATION

[illegible]

## ACCENTED UPPERCASES

1 2 3 4 5 6 7 8 9 10 11 12 13 14 15 16 17 18 19 20 21 22 23 24 25 26 27 28 29 30 31 32 33 34 35 36 37 38 39 40 41 42 43 44 45 46 47 48 49 50 51 52 53 54 55 56 57 58 59 60 61 62 63 64 65 66 67 68 69 70 71 72 73 74 75 76 77 78 79 80 81 82 83 84 85 86 87 88 89 90 91 92 93 94 95 96 97 98 99 100  
 A B C D E F G H I J K L M N O P Q R S T U V W X Y Z [ \ ] ^ \_ ` a b c d e f g h i j k l m n o p q r s t u v w x y z { | } ~ ¡ ¢ £ ¤ ¥ ¦ § ¨ © ª « ¬ ® ¯ ° ± ² ³ ´ µ ¶ · ¸ ¹ º » ¼ ½ ¾ ¿ À Á Â Ã Ä Å Æ Ç È É Ê Ë Ì Í Î Ï Ñ Ò Ó Ô Õ Ö × Ø Ù Ú Û Ü Ý Þ ß à á â ã

## ACCENTED LOWERCASES

**A  
B  
C  
D  
E  
F  
G  
H  
I  
J  
K  
L  
M  
N  
O  
P  
Q  
R  
S  
T  
U  
V  
W W**

CAPS PUNCTUATION



## DEFAULT FIGURES

**0123456789**

## PROPORTIONAL LINING FIGURES

0123456789

## PROPORTIONAL OLD STYLE FIGURES



---

TABULAR  
LINING FIGURES

0123456789

---

TABULAR  
OLD STYLE FIGURES



## PREBUILD & AUTOMATIC FRACTIONS

$$\frac{1}{2} \frac{1}{4} \frac{3}{4} \frac{1}{8} \frac{3}{8} \frac{5}{8} \frac{7}{8} \quad 12345/67890$$

---

SUPERIORS/INFERIORS

■ A B C D E F G H I J K L M N O P Q R S T U V W X Y Z 0 1 2 3 4 5 6 7 8 9

0123456789

NOMINATORS /  
DENOMINATORS

0123456789 0123456789

## ORDINALS

ao nonos nonos

---

SYMBOLS &  
MATHEMATICAL SIGNS

SCCCECKYVFNOPPP@E'%%.v

$$\alpha^{\circ}\S\textcircled{\scriptsize{R}}\textcircled{\scriptsize{P}}^{\text{Tm}}||\dagger\dagger+-x\div=\#><\geq\leq\pm\approx\sim\neg^{\wedge}\infty\emptyset f\int\Delta\Pi\Sigma\sqrt{\partial}_{\mu}\Delta\Omega_{\mu}\Pi$$

## STANDARD LIGATURES

**FFL**

## DISCRETIONARY LIGATURES



## CHARACTER MAP

## ORNAMENTS



## SS01 (ARROWS)



## SS02 (A)



## SS03 (M N)



## SS04 (K)



## OPENTYPE FEATURES

1. Automatically spaced capitals.
2. Punctuation is optically repositionning
- 3, 4. Specific small capitals whereas optically reduced capitals.
5. Specific glyphs in several languages.
- 6, 7, 8, 9. Specific superior and inferior glyphs.
- 10, 11. Proportional figures.
- 12, 13. Tabular figures, practical when the user needs alignment in columns.
14. Slashed zero to distinguish with letter O.
15. Standard ligatures automatically correct collision between two characters.
16. Smart ligatures.
17. Specific contextual glyphs.

	FEATURE OFF	FEATURE ON
1. FULL CAPS	✗	✗
2. CASE SENSITIVE FORMS	✗	✗
3. SMALL CAPS	✗	✗
4. CAPS TO SMALL CAPS	✗	✗
5. LOCALIZED FORMS		
ROMANIAN	CHISINĂU GALĂȚI	CHISINĂU GALĂȚI
CATALAN	PARAL·LEL	PARALLEL
FRENCH	DIS: «VOUSI»	DIS: «VOUS»
TURKISH	DIYARBAKIR	DIYARBAKIR
DUTCH	MIJN	MIJN
6. ORDINALS	no nos no nos 1a 1o	no nos no nos 1 <sup>a</sup> 1 <sup>o</sup>
7. FRACTIONS	1/2 1/2 3/4	1/4 1/2 3/4
8. SUPERIORS	MR MME 1ER	M <sup>R</sup> M <sup>ME</sup> 1 <sup>ER</sup>
9. INFERIORS	H <sub>2</sub> O FE <sub>3</sub> O <sub>4</sub>	H <sub>2</sub> O FE <sub>3</sub> O <sub>4</sub>
10. PROPORTIONAL LINING FIGURES	0123456789	0123456789
11. PROPORTIONAL OLD STYLE FIG.	✗	✗
12. TABULAR LINING FIGURES	01234 56789	01234 56789
13. TABULAR OLD STYLE FIG.	✗	✗
14. SLASHED ZERO	✗	✗

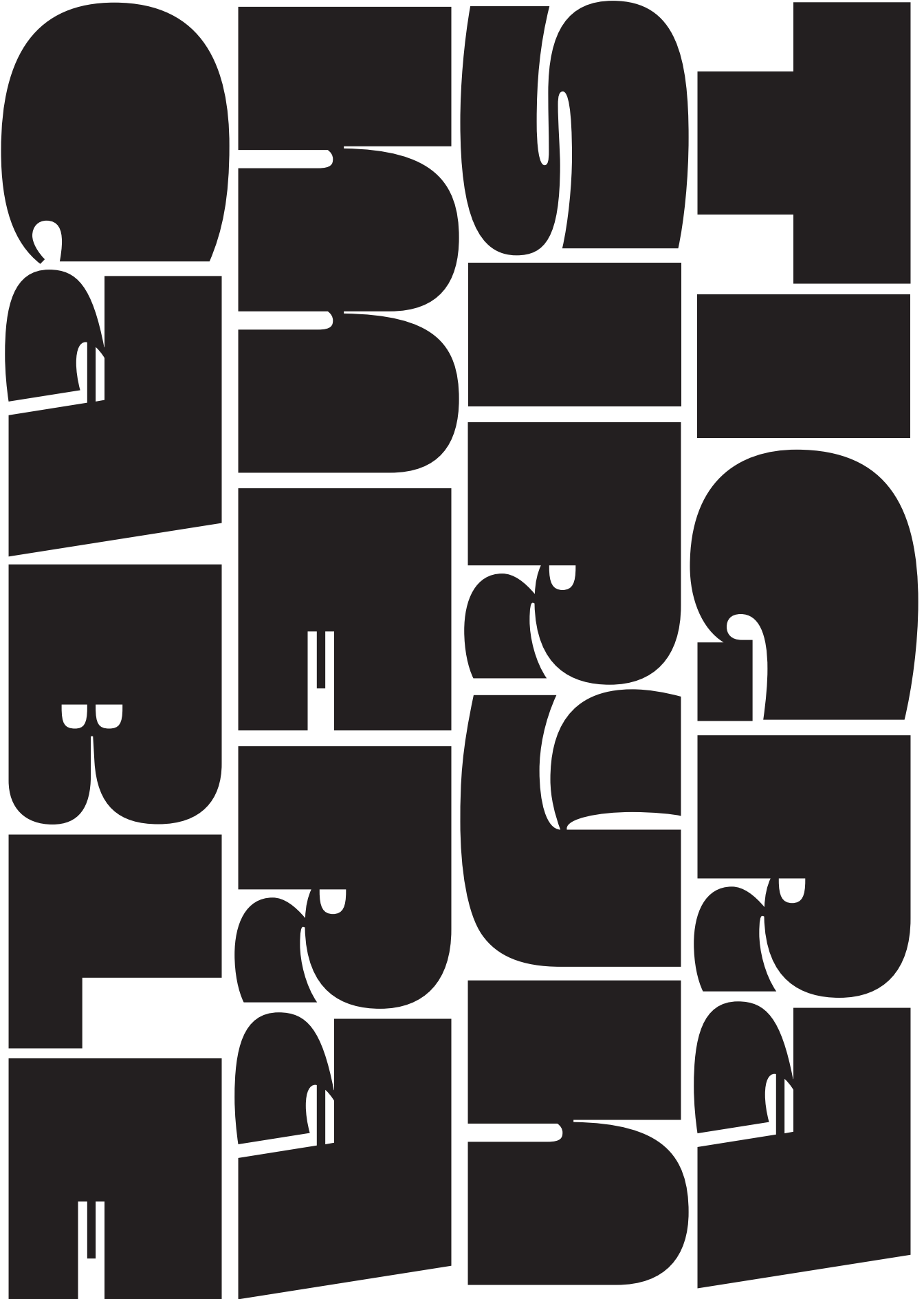


## OPENTYPE FEATURES

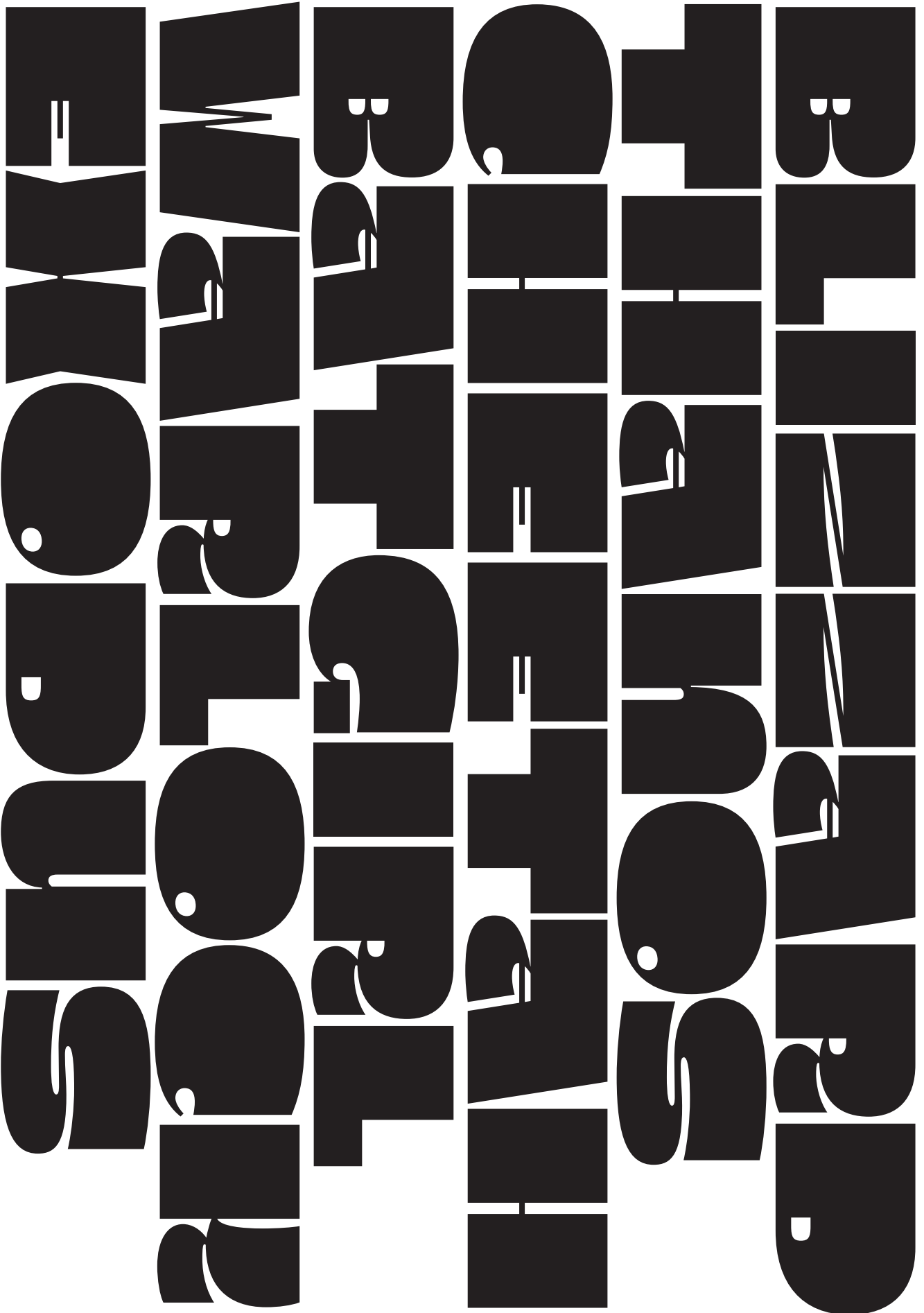
The stylistic set function allows to access to specific signs which replace glyphs in the standard set.  
A typeface can contain 20 stylistic sets.

	FEATURE OFF	FEATURE ON
15. LIGATURES	<b>AFFICHER</b>	<b>AFFICHER</b>
16. DISCRETIONARY LIGATURES	X	X
17. CONTEXTUAL ALTERNATES	<b>08H32MM</b> <b>10H65MM</b>	<b>08×32MM</b> <b>10×65MM</b>
SS01 (ARROWS)	<b>W</b> <b>E</b> <b>S</b> <b>N</b> <b>NW</b> <b>NE</b> <b>SE</b> <b>SW</b> <b>NS</b> <b>WE</b>	← → ↓ ↑ ↖ ↗ ↘ ↙ ↕ ↔
SS02 (A)	<b>ALIVE</b>	<b>ALIVE</b>
SS03 (M N)	<b>BOUNCE</b> <b>MAGIC</b>	<b>BOUNCE</b> <b>MAGIC</b>
SS04 (K)	<b>PHOCK</b>	<b>KNOCK</b>

166PT



108PT



HEAVY

80PT

DEFAULT

GRAVITY  
SHRIEK  
DOMINO  
MODOK  
SHAZAM

80PT

SS02 (A) SS03 (M N) SS04 (K)

GRAVITY  
SHRIEK  
DOMINO  
MODOK  
SHAZAM

56PT

DEFAULT

SNAKE-EYES  
QUANTUM  
WINDICATOR  
SUPERCIRL  
BLOODHAWK  
HAWKMAN  
NORTHSTAR

56PT

SS02 (A) SS03 (M N) SS04 (K)

SNAKE-EYES  
QUANTUM  
WINDICATOR  
SUPERCIRL  
BLOODHAWK  
HAWKMAN  
NORTHSTAR

48PT

DEFAULT

MOON KNIGHT  
KILLER FROST  
DEATHSTROKE  
PROFESSOR X  
BLACK CANARY  
CANNONBALL  
JESSICA JONES  
SPACE GHOST

48PT

SS02 (A) SS03 (M N) SS04 (K)

MOON KNIGHT  
KILLER FROST  
DEATHSTROKE  
PROFESSOR X  
BLACK CANARY  
CANNONBALL  
JESSICA JONES  
SPACE GHOST

---

CREDITS

Designed by: İbrahim Kaçtıoğlu  
Mastering: 205TF  
Translation: Derek Byrne  
205TF staff: Alexis Faudot, Rémi Forte, Damien Gautier,  
Florence Roller, Tanguy Vanlaeys

---

CAUTION

In order to protect the work of the typeface designer,  
this pdf file is locked.  
205TF will initiate legal action against anyone unlocking this pdf.

---

CONTACT

205 Corp.  
24, rue Commandant-Faurax  
69006 Lyon  
France

T. +33 (0)4 37 47 85 69  
contact@205.tf

SAS 205 Corp.  
SIRET 522 580 430 00026  
TVA Intra FR-45522580430

---

COPYRIGHT

205TF is a trademark of 205 Corp.

