

The CX80 typeface is a “machine”^{**} as rudimentary as it is atypical. Four kinds of serifs are combined in the same font: sans serifs, triangular serifs, sharp rectangular serifs, and smooth rectangular serifs. Each letter can exhaust all possible combinations: up to 256 variations for any one sign!

The user is free to play with the possibilities provided by the typeface. Either they choose to be an iconoclast by associating different serifs (simply using their keyboard), or they may prefer one of the four basic styles that correspond to each of the serifs.

Behind this intentionally economic design, CX80 reveals a unique potential; particularly as weight can be adjusted at will using variable font technology.

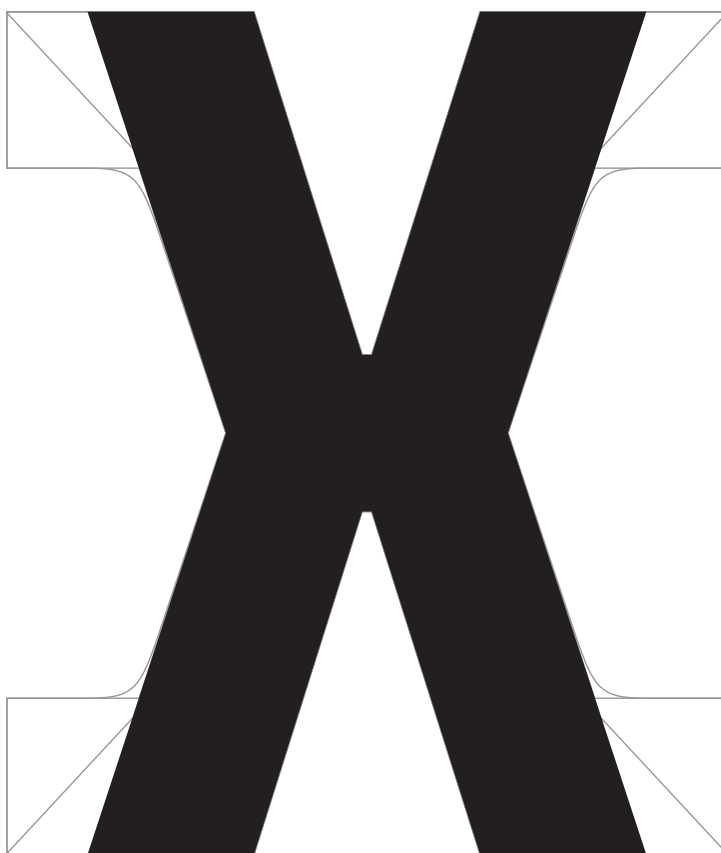
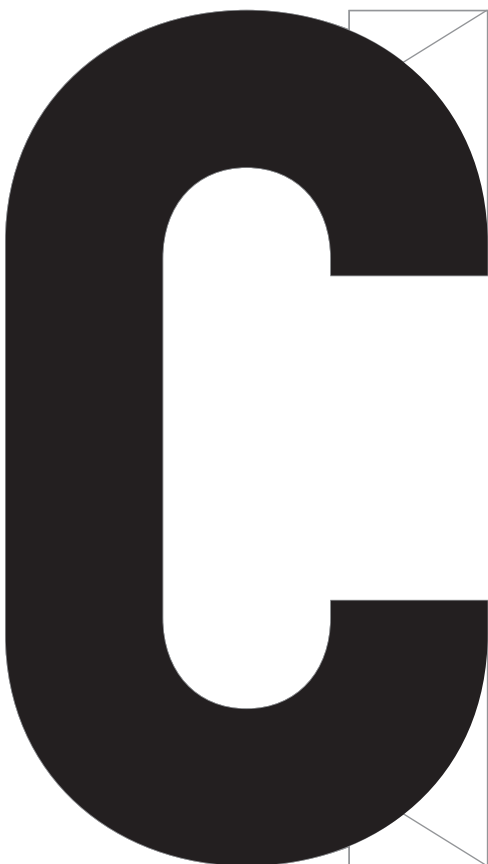
CX80 reveals its formal and conceptual sources of inspiration through its modular and composite appearance. The name openly refers to the Codex 80 type classification imagined by Jean Alessandrini^{**} in 1980. Seeking an alternative to traditional classifications, he proposed a new taxonomy adapted to the typographic renewal of the time.

A second influence is the modding of scooters. During the 1980s (when Damien Gautier was old enough to buy his first Piaggio Ciao), teenagers were in the habit of customizing their mopeds by adding functional and decorative elements. This culture of outrageous tinkering and modding also runs through the typeface.

With CX80, Damien Gautier continues his exploration of vernacular typographical forms produced by amateurs and industrial designers. Forms that he loves for their freshness and ingenuity, that here once again show their surprising potential.

* CX80 echoes other typefaces by Damien Gautier: *LeChauferie*, *Robin*, and *Helium*.

** Jean Alessandrini (1942), French typographer, illustrator, and writer.



240 PTS

CX80

120 PTS

CX80 CX8

56 PTS

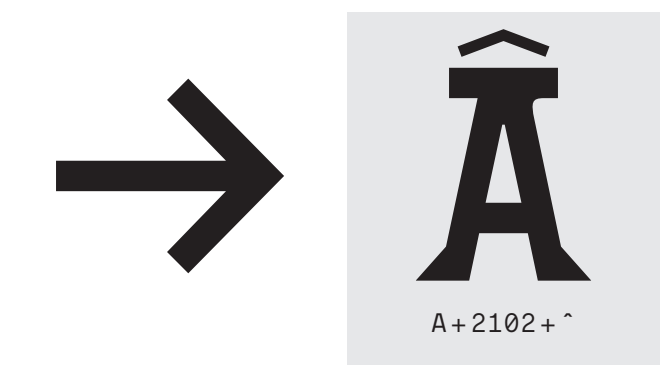
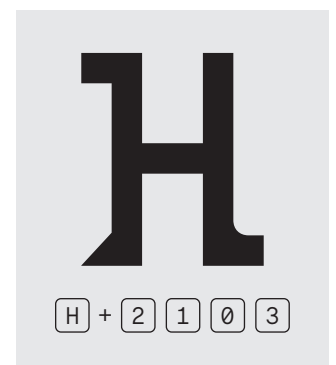
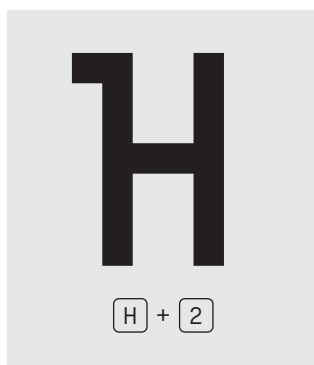
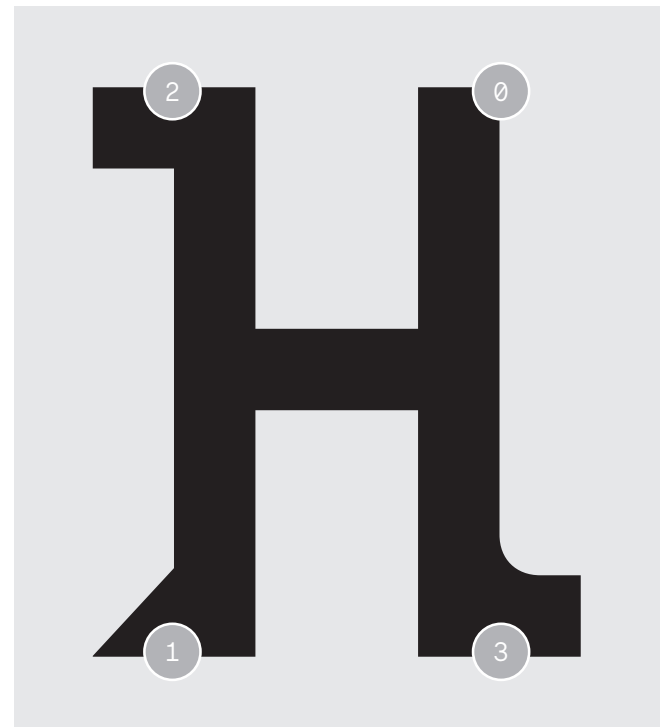
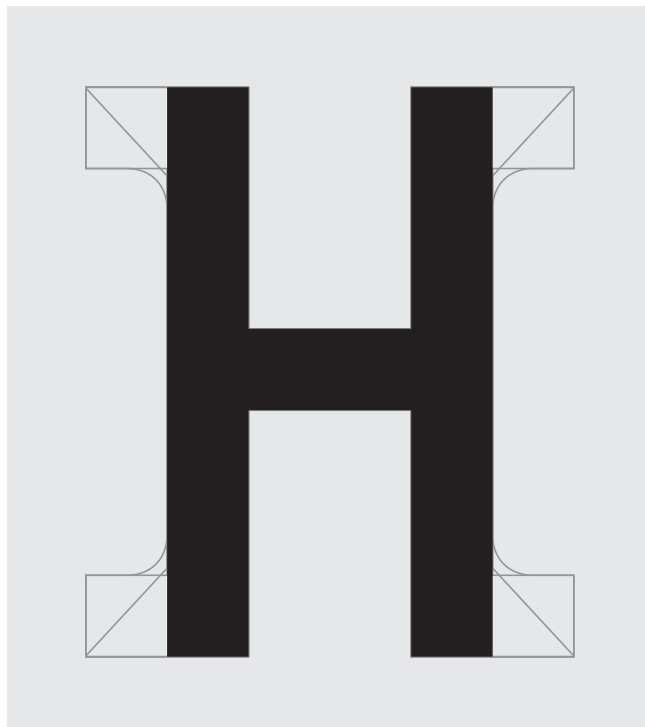
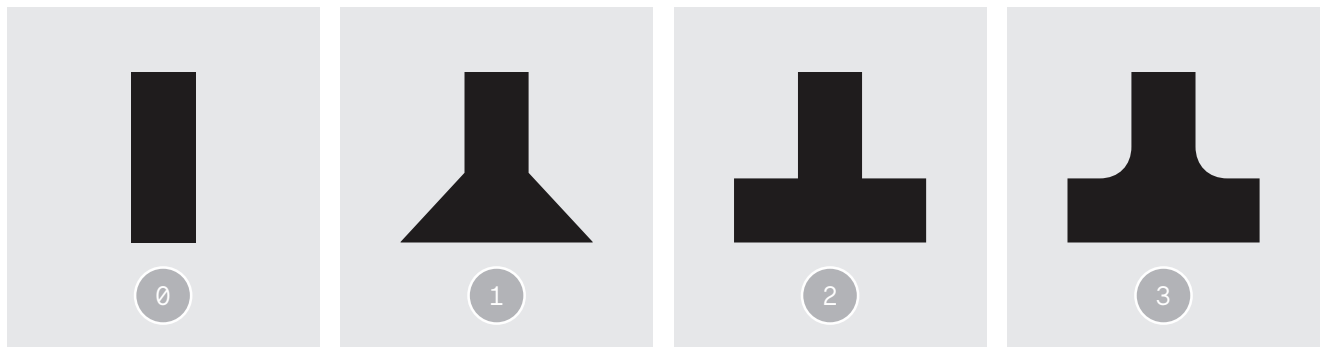
CX80 CX80 CX80 CX8

32 PTS

CX80 CX80 CX80 CX80 CX80 CX80 CX

24 PTS

CX80 CX80 CX80 CX80 CX80 CX80 CX80 CX



STYLES

CX80 LIGHT

ALL SERIFS

CX80 LIGHT

CX80 REGULAR

ALL SERIFS

CX80 REGULAR

CX80 BOLD

ALL SERIFS

CX80 BOLD

CX80 0 LIGHT

SANS SERIFS

CX80 0 LIGHT

CX80 0 REGULAR

SANS SERIFS

CX80 0 REGULAR

CX80 0 BOLD

SANS SERIFS

CX80 0 BOLD

CX80 1 LIGHT

TRIANGULAR SERIFS

CX80 1 LIGHT

CX80 1 REGULAR

TRIANGULAR SERIFS

CX80 1 REGULAR

CX80 1 BOLD

TRIANGULAR SERIFS

CX80 1 BOLD

CX80 2 LIGHT

SHARP RECTANGULAR SERIFS

CX80 2 LIGHT

CX80 2 REGULAR

SHARP RECTANGULAR SERIFS

CX80 2 REGULAR

CX80 2 BOLD

SHARP RECTANGULAR SERIFS

CX80 2 BOLD

CX80 3 LIGHT

SMOOTH RECTANGULAR SERIFS

CX80 3 LIGHT

CX80 3 REGULAR

SMOOTH RECTANGULAR SERIFS

CX80 3 REGULAR

CX80 3 BOLD

SMOOTH RECTANGULAR SERIFS

CX80 3 BOLD

INTRODUCTION

OWNERSHIP AND LICENCE

A typeface is created by a designer whose art is to transform an original typographic artwork into a computer file or files. As a consequence a typeface is – as a work – protected by laws pertaining to intellectual property rights and – as software – can not be copied and/or installed without first acquiring a nominative licence.

In no way, shape or form may a typeface be transmitted to a third party or modified. The desired modifications in the context of the development of a visual identity, can only be effected by the designer himself and only after acquisition of a written authorisation from 205TF.

The user of a 205TF typeface must first acquire of a licence that is adapted to his needs (desktop, web, application/epub, TV/film/videos web).

A licence is nominative (a physical person or business) and is non-transferable. The licensee can not transmit the typeface files to other people or organisations, including but not limited to partners and/or subcontractors who must acquire a separate and distinct licence or licences. The full text of the licence and terms of use can be downloaded here: any person or entity found in breach of one or more terms of the licence may be prosecuted.

THE OPENTYPE FORMAT

The OpenType format is compatible with both Macintosh and Windows platforms. Based on Unicode encoding it can contain up to 65,000 signs* including a number of writing systems (Latin, Greek, Cyrillic, Hebrew, etc.) and numerous signs that allow users to create accurate and sleek typographic compositions

(small capitals, aligned and oldstyle numerals, proportionals and tabulars, ligatures, alternative letters, etc.). The OpenType format is supported by a wide range of software. The dynamic functions are accessed differently depending on the software used.

*A Postscript or Truetype typeface can contain no more than 256 signs.

SUPPORTED LANGUAGES

Afar	Croatian	Malagasy	Palauan
French	Igbo	Silesian	Tok Pisin
Afrikaans	Czech	Malay	Polish
Gaelic	Indonesian	Slovak	Tongan
Albanian	Danish	Maltese	Portuguese
Gagauz	Irish	Slovenian	Tsonga
Azerbaijani	Dutch	Manx	Quechua
German	Italian	Somali	Tswana
Basque	English	Maori	Romanian
Gikuyu	Javanese	Sorbian	Turkish
Belarusian	Estonian	Marquesan	Romansh
Gilbertese	Kashubian	Sotho	Turkmen
Bislama	Esperanto	Moldavian	Sami
Greenlandic	Kinyarwanda	Spanish	Tuvaluan
Bosnian	Faroese	Montenegrin	Samoan
Guarani	Kirundi	Setswana	Uzbek
Breton	Fijian	Nauruan	Sango
Haitian	Luba	Swati	Wallisian
Catalan	Filipino	Ndebele	Scottish
Haitian Creole	Latin	Swahili	Walloon
Chamorro	Finnish	Norwegian	Serbian
Hawaiian	Latvian	Swedish	Welsh
Chichewa	Flemish	Occitan	Sesotho
Hungarian	Lithuanian	Tahitian	Xhosa
Comorian	Frison	Oromo	Seychellois
Icelandic	Luxembourgish	Tetum	Zulu

ELEMENTARY PRINCIPLES OF USE

To buy ore By buying a typeface you support typeface designers who can dedicate the time necessary for the development of new typefaces (and you are of course enthusiastic at the idea of discovering and using them!)

Copy? By copying and illegally using typefaces, you jeopardise designers and kill their art. In the long term the result will be that you will only have Arial available to use in your compositions (and it would be well deserved!)

Test! 205TF makes test typefaces available. Before downloading them from www.205.tf you must first register. These test versions are not complete and can only be used in models/mock ups. Their use in a commercial context is strictly prohibited.

RESPONSIBILITY

205TF and the typeface designers represented by 205TF pay particular attention to the quality of the typographic design and the technical development of typefaces.

Each typeface has been tested on Macintosh and Windows, the most popular browsers (for webfonts) and on Adobe applications (InDesign, Illustrator, Photoshop) and Office (Word, Excel, Power point).

205TF can not guarantee their correct functioning when used with other operating system or software. 205TF can not be considered responsible for an eventual “crash” following the installation of a typeface obtained through the www.205.tf website.

CHARACTER MAP

[illegible]

7 / 39

[illegible]

OPENTYPE FEATURES

1. Automatically spaced capitals.
2. Punctuation is optically repositionning
- 3, 4. Specific small capitals whereas optically reduced capitals.
5. Specific glyphs in several languages.
- 6, 7, 8, 9. Specific superior and inferior glyphs.
- 10, 11. Proportional figures.
- 12, 13. Tabular figures, practical when the user needs alignment in columns.
14. Slashed zero to distinguish with letter O.
15. Standard ligatures automatically correct collision between two characters.
16. Smart ligatures.

	FEATURE OFF	FEATURE ON
1. FULL CAPS	×	×
2. CASE SENSITIVE FORMS	×	×
3. SMALL CAPS	×	×
4. CAPS TO SMALL CAPS	×	×
5. LOCALIZED FORMS		
CATALAN	PARAL·LEL	PARALLEL
FRENCH	IL DIT:« VOUS FÎTES »	IL DIT:« VOUS FÎTES »
6. ORDINALS	NO NOS 1A 10	Nº N ^{OS} 1 ^A 1 ^O
7. FRACTIONS	1/4 1/2 3/4	¼ ½ ¾
8. SUPERIORS	MR MME 1ER	M ^R M ^{ME} 1 ^{ER}
9. INFERIORS	H2O FE304	H ₂ O FE ₃ O ₄
10. PROPORTIONAL LINING FIGURES	0123456789	0123456789
11. PROPORTIONAL OLD STYLE FIG.	×	×
12. TABULAR LINING FIGURES	0123456789	0123456789
13. TABULAR OLD STYLE FIG.	×	×
14. SLASHED ZERO	×	×
15. LIGATURES	AFFICHER	AFFICHER
16. DISCRETIONARY LIGATURES	J2A1111M3002A3103I0333C20A0011N2102 R133U21M1130	JAMAICAN RUM

OPENTYPE FEATURES

The stylistic set function allows to access to specific signs which replace glyphs in the standard set.
A typeface can contain 20 stylistic sets.

	FEATURE OFF	FEATURE ON
ARROWS (SS01)	<p>—W —E —S —N —NW —NE —SE —SW —NS —WE</p>	<p>← → ↓ ↑ ↖ ↗ ↘ ↙ ↕ ↔</p>
THICK PONCTUATION (SS02)	<p>(IRISH WHISKEY) [DRY VERMOUTH] «CANCHANCHARA»</p>	<p>(IRISH WHISKEY) [DRY VERMOUTH] «CANCHANCHARA»</p>

384PT

I0131C11E0012

ICE

384PT

I2101C2E0022

ICE

384PT

I0131C11E0012

ICE

384PT

I2101C2E0022

ICE

384PT

I0131C11E0012

A large, bold, black serif font specimen showing the letters 'T', 'C', and 'E'. The 'T' has a thick vertical stem and a horizontal top bar with a slight serif. The 'C' is a deep, rounded bowl with a sharp, pointed terminal at the top right. The 'E' is a classic three-bar serif with a thick vertical stem and horizontal bars that have small, sharp serifs at their ends.

384PT

I2101C2E0022

A large, bold, black serif font specimen showing the letters 'T', 'C', and 'E'. The 'T' has a thick vertical stem and a horizontal top bar with a slight serif. The 'C' is a deep, rounded bowl with a sharp, pointed terminal at the top right. The 'E' is a classic three-bar serif with a thick vertical stem and horizontal bars that have small, sharp serifs at their ends.

200PT

OL1331I1101V2221E3300

OLIVE

200PT

OL1100I3122V3220E0102

OLIVE

200PT

OL1200I0103V1313E1012

OLIVE

200PT

OL3300I0211V0202E3211

OLIVE

200PT

OL1331I1101V2221E3300

OLIVE

200PT

OL1100I3122V3220E0102

OLIVE

200PT

OL1200I0103V1313E1012

OLIVE

200PT

OL3300I0211V0202E3211

OLIVE

200PT

OL1331I1101V2221E3300

OLIVE

200PT

OL1100I3122V3220E0102

OLIVE

200PT

OL1200I0103V1313E1012

OLIVE

200PT

OL3300I0211V0202E3211

OLIVE

104PT

FEW
SPLASH
OF LEMON
JUICE

F0221E3322W3222
S21P122L2001A3220S20H0012
OF2021 L2013E1311M0031ON3130
J3U23I0112C33E0022

104PT

FEW
SPLASH
OF LEMON
JUICE

F3022E3130W0030
S11P221L0223A3031S01H2201
OF2030 L0303E2321M0332ON1331
J1U10I0300C21E1202

104PT

FEW
SPLASH
OF LEMON
JUICE

F0221E3322W3222
S21P122L2001A3220S20H0012
OF2021 L2013E1311M0031ON3130
J3U23I0112C33E0022

104PT

FEW
SPLASH
OF LEMON
JUICE

F3022E3130W0030
S11P221L0223A3031S01H2201
OF2030 L0303E2321M0332ON1331
J1U10I0300C21E1202

104PT

FEW
SPLASH
OF LEMON
JUICE

F0221E3322W3222
S21P122L2001A3220S20H0012
OF2021 L2013E1311M0031ON3130
J3U23I0112C33E0022

104PT

FEW
SPLASH
OF LEMON
JUICE

F3022E3130W0030
S11P221L0223A3031S01H2201
OF2030 L0303E2321M0332ON1331
J1U10I0300C21E1202

80PT

TUXEDO
MARTINI
BOURBON
SAZERAC
TEQUILA

T3201U22X3112E2123D030
M2231A1232R001T1123I2202N0210I0013
B230U30R211B11ON2000
S01A3311Z03E0231R313A2331C01
T1122E1300Q0U12I2121L3101A3103

80PT

TUXEDO
MARTINI
BOURBON
SAZERAC
TEQUILA

T0031U22X3330E0030D120
M0012A3313R302T1232I0112N2330I0031
B300U03R011B10ON3203
S10A2102Z13E0120R322A3303C30
T2120E3100Q1U2I0032L0002A0330

80PT

TUXEDO
MARTINI
BOURBON
SAZERAC
TEQUILA

T3201U22X3112E2123D030
M2231A1232R001T1123I2202N0210I0013
B230U30R211B11ON2000
S01A3311Z03E0231R313A2331C01
T1122E1300Q0U12I2121L3101A3103

80PT

TUXEDO
MARTINI
BOURBON
SAZERAC
TEQUILA

T0031U22X3330E0030D120
M0012A3313R302T1232I0112N2330I0031
B300U03R011B10ON3203
S10A2102Z13E0120R322A3303C30
T2120E3100Q1U2I0032L0002A0330

80PT

TUXEDO
MARTINI
BOURBON
SAZERAC
TEQUILA

T3201U22X3112E2123D030
M2231A1232R001T1123I2202N0210I0013
B230U30R211B11ON2000
S01A3311Z03E0231R313A2331C01
T1122E1300Q0U12I2121L3101A3103

80PT

TUXEDO
MARTINI
BOURBON
SAZERAC
TEQUILA

T0031U22X3330E0030D120
M0012A3313R302T1232I0112N2330I0031
B300U03R011B10ON3203
S10A2102Z13E0120R322A3303C30
T2120E3100Q1U2I0032L0002A0330

56PT

HONEY MIX
FRENCH 75
CHAMPAGNE
OLD CUBAN
CLOVER CLUB
DRAMBUIE
BEE'S KNEES

H1223ON2312E1103Y2211 M0222I1323X3332
F0021R331E3232N2030C30H0022 75
C33H0210A1212M3003P111A1123G01N2030E3223
OL1020D30 C21U00B21A0322N0312
C02L0002OV2213E0011R312 C00L2210U02B32
D33R233A3120M1300B30U20I122E3332
B00E2231E3313'S01 K1022N3211E2110E0202S10

56PT

HONEY MIX
FRENCH 75
CHAMPAGNE
OLD CUBAN
CLOVER CLUB
DRAMBUIE
BEE'S KNEES

H0112ON1202E0022Y3103 M1302I1033X1301
F0001R222E3000N0001C01H0122 75
C02H0123A2000M2200P203A0232G01N3303E3102
OL3003D13 C23U00B12A2313N3313
C10L0012OV2113E0203R033 C02L0010U01B00
D33R001A2132M2003B02U13I1112E0022
B11E1023E0033'S31 K1100N3330E0101E0301S13

56PT

HONEY MIX
FRENCH 75
CHAMPAGNE
OLD CUBAN
CLOVER CLUB
DRAMBUIE
BEE'S KNEES

H1223ON2312E1103Y2211 M0222I1323X3332
F0021R331E3232N2030C30H0022 75
C33H0210A1212M3003P111A1123G01N2030E3223
OL1020D30 C21U00B21A0322N0312
C02L0002OV2213E0011R312 C00L2210U02B32
D33R233A3120M1300B30U20I122E3332
B00E2231E3313'S01 K1022N3211E2110E0202S10

56PT

HONEY MIX
FRENCH 75
CHAMPAGNE
OLD CUBAN
CLOVER CLUB
DRAMBUIE
BEE'S KNEES

H0112ON1202E0022Y3103 M1302I1033X1301
F0001R222E3000N0001C01H0122 75
C02H0123A2000M2200P203A0232G01N3303E3102
OL3003D13 C23U00B12A2313N3313
C10L0012OV2113E0203R033 C02L0010U01B00
D33R001A2132M2003B02U13I1112E0022
B11E1023E0033'S31 K1100N3330E0101E0301S13

56PT

HONEY MIX
FRENCH 75
CHAMPAGNE
OLD CUBAN
CLOVER CLUB
DRAMBUIE
BEE'S KNEES

H1223ON2312E1103Y2211 M0222I1323X3332
F0021R331E3232N2030C30H0022 75
C33H0210A1212M3003P111A1123G01N2030E3223
OL1020D30 C21U00B21A0322N0312
C02L0002OV2213E0011R312 C00L2210U02B32
D33R233A3120M1300B30U20I122E3332
B00E2231E3313'S01 K1022N3211E2110E0202S10

56PT

HONEY MIX
FRENCH 75
CHAMPAGNE
OLD CUBAN
CLOVER CLUB
DRAMBUIE
BEE'S KNEES

H0112ON1202E0022Y3103 M1302I1033X1301
F0001R222E3000N0001C01H0122 75
C02H0123A2000M2200P203A0232G01N3303E3102
OL3003D13 C23U00B12A2313N3313
C10L0012OV2113E0203R033 C02L0010U01B00
D33R001A2132M2003B02U13I1112E0022
B11E1023E0033'S31 K1100N3330E0101E0301S13

CHARACTER MAP

[illegible]

200PT

MINT

104PT

FRENCH
MARTINI

80PT

FEW DROPS
OF EGG WHITE

56PT

THE ORIGIN OF
THE WORD "RUM"
IS UNCLEAR.

200PT

MINT

104PT

FRENCH
MARTINI

80PT

FEW DROPS
OF EGG WHITE

56PT

THE ORIGIN OF
THE WORD "RUM"
IS UNCLEAR.

200PT

MINT

104PT

**FRENCH
MARTINI**

80PT

**FEW DROPS
OF EGG WHITE**

56PT

**THE ORIGIN OF
THE WORD "RUM"
IS UNCLEAR.**

200PT

MINI

104PT

FRENCH
MARTINI

80PT

FEW DROPS
OF EGG WHITE

56PT

THE ORIGIN OF
THE WORD "RUM"
IS UNCLEAR.

200PT

MINT

104PT

FRENCH
MARTINI

80PT

FEW DROPS
OF EGG WHITE

56PT

THE ORIGIN OF
THE WORD "RUM"
IS UNCLEAR.

200PT

MINT

104PT

**FRENCH
MARTINI**

80PT

**FEW DROPS
OF EGG WHITE**

56PT

**THE ORIGIN OF
THE WORD "RUM"
IS UNCLEAR.**

200PT

MINT

104PT

FRENCH
MARTINI

80PT

FEW DROPS
OF EGG WHITE

56PT

THE ORIGIN OF
THE WORD "RUM"
IS UNCLEAR.

200PT

MINT

104PT

**FRENCH
MARTINI**

80PT

**FEW DROPS
OF EGG WHITE**

56PT

**THE ORIGIN OF
THE WORD "RUM"
IS UNCLEAR.**

200PT

MINT

104PT

**FRENCH
MARTINI**

80PT

**FEW DROPS
OF EGG WHITE**

56PT

**THE ORIGIN OF
THE WORD "RUM"
IS UNCLEAR.**

CX80 3 LIGHT

200PT

MINT

104PT

FRENCH
MARTINI

80PT

FEW DROPS
OF EGG WHITE

56PT

THE ORIGIN OF
THE WORD "RUM"
IS UNCLEAR.

200PT

MINT

104PT

FRENCH
MARTINI

80PT

FEW DROPS
OF EGG WHITE

56PT

THE ORIGIN OF
THE WORD "RUM"
IS UNCLEAR.

200PT

MINT

104PT

**FRENCH
MARTINI**

80PT

**FEW DROPS
OF EGG WHITE**

56PT

**THE ORIGIN OF
THE WORD "RUM"
IS UNCLEAR.**

CREDITS

Designed by: Damien Gautier
Mastering: 205TF
Translation: Derek Byrne
Proofreading: Alan Marshall
205TF staff: Charly Derouault, Alexis Faudot, Rémi Forte,
Damien Gautier, Emma Marichal, Florence Roller,
Tanguy Vanlaeys

CAUTION

In order to protect the work of the typeface designer,
this pdf file is locked.
205TF will initiate legal action against anyone unlocking this pdf.

CONTACT

205 Corp.
24, rue Commandant-Faurax
69006 Lyon
France

T. +33 (0)4 37 47 85 69
contact@205.tf

SAS 205 Corp.
SIRET 522 580 430 00026
TVA Intra FR-45522580430

COPYRIGHT

205TF is a trademark of 205 Corp.

